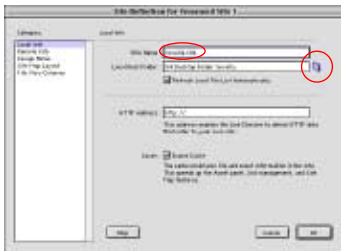


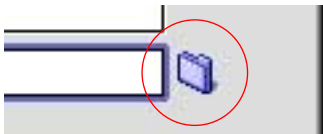
# Photo Novella in Dreamweaver 4



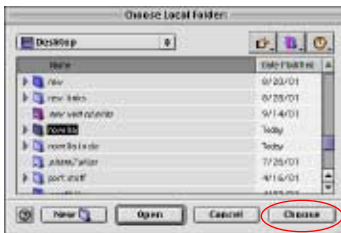
Photo Novella



Define Site Window



Link Folder



Choosing the Site Folder



Site Window offers site management features such as auto update of links.

1. First let's make a **new folder** on the desktop to hold all the files we create. Rename it **novella**.

2. Next we'll define a site in Dreamweaver. Open DW and choose **Site > New Site**.

a. In the first box, name the site **novella site**.

b. Click on the **link folder** at the end of the second box titled local root folder. In the dialog box that opens, **select the novella folder** you created in step one and click the **choose** button.

3. Make a **new document** (Cmd-N).

4. **Save as index.html**. Be sure to save often.

5. Choose **Modify > Page Properties**. Give the page a **title** and choose a **background color** (click on colour chip). Next, set the **Margin Heights** and **Widths** to **0**. This removes any border in the browser window. Images or text will be flush to the edge of the window. Try it with and without a setting in these boxes to see the difference.

6. Next we'll add a table that stretches to fit the browser. If we insert an image in this table and center it, the image will always be centered in the web browser:

a. Click in the document window and choose **Insert > Table**. Set the values as follows:

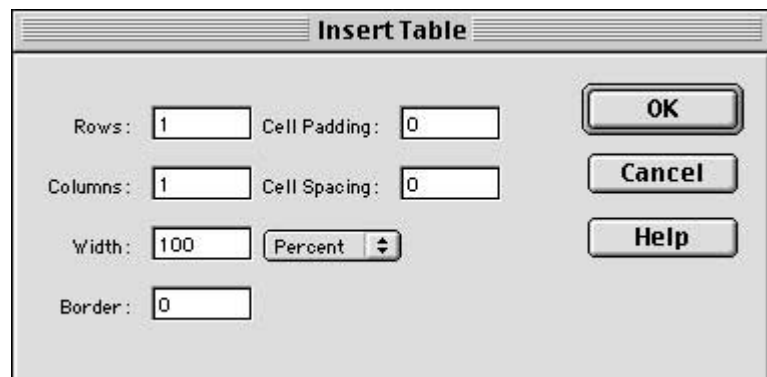




Table Tag at bottom left of Document Window

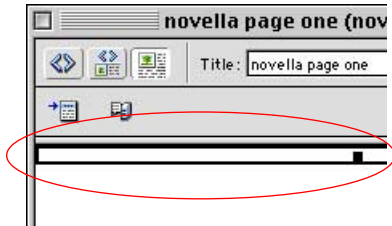


Table selected



Property Palette



Property Palette



images folder



Selecting a new image

b. **Click inside the table** that we just added to the document. Then click on the **<table>** tag at the bottom of the window to select the table.

c. With the table selected, change the **height** setting in the property palette to **100%**. (Window > Properties)

7. Next we'll add an image to the page. Your images should be a size that will fit in the average web browser. I recommend **600 x 400 pixels**, but you must determine the correct size for your piece and for your target audience. Photographic images should be saved as **JPEG** and graphic images as **GIFs**. See the **Saving for the Web** handout for more information on the two formats. Name your images **01.jpg**, **02.jpg**, **03.jpg** to make linking of images easier in step 9 below.

a. **Move your folder of web ready images into the novella** folder on the desktop. Be sure that **only** web ready images are in the folder so that when you upload files, you only upload what you need. Name the folder **images**.

b. In DW, click inside the table in the document. Click the **center** button in the **properties palette**. The cursor should now be centered within the document.

c. Choose **Insert > Image**. In the dialog box that comes up, choose the first image in your novella from the **images** folder that you just moved into the novella folder. Be sure not to link to a file that is outside the novella folder. Save the document.

8. We'll use this page as a template for the other pages. Choose **File > Save As...** and save as many pages as you have images in the images folder. Name them **page2.html**, **page3.html**, **page3.html**, etc...

9. **Open each page** you just saved by double clicking it's icon in the site window and **edit the title** at the top of the document window.

Then **replace images** on these pages with the subsequent images by **double clicking the image** and then point to new image in the images folder.

novella page one (novella/inc

Title: novella page one

Title box

Verdana, Arial, Helve

Size None

#000000

**B** *I* [List Bulleted] [List Numbered] [List None]

Font Group, Size, Color and Bold, Italic, Alignment in Properties palette

10. Create links between pages:

On each page, first **select the image**. With the image selected, click on the **links folder** in the properties palette. A dialog box opens, **select the next page** in the novella folder and **click open**.

\* You can also add text and link it by selecting it and clicking on the link folder in the property palette to link it to another page, a sound, movie, etc.

\*\* To format text, select it and use the Font controls in the property palette. Be sure to set text and link color globally via Modify > Page Properties. You can also color text locally using the property palette. Link color can only be specified via Modify > Page Properties.

11. Preview your work using **F12** or **File > Preview in Browser**. Be sure to click on all links to check for errors.

Error messages that you may encounter in DW:

1. **The local root folder does not exist** or **Can't find site**. This happens if you moved the site folder or you have moved to another machine.

Answer: Define site again using Site > Define Sites. (see step #2)

2. **To make a document relative path, your document should be saved first**. This happens when you create a new document and start working without saving it.

Answer: Hit cancel and save it. Then insert an image, etc.

3. **The file is outside of the root folder**. This happens if you link to a file outside the site folder.

Answer: Make sure all your assets are within the site folder! If you only have a single stray file, click Yes, then navigate to the images folder for images or the novella folder for pages, click Save.

4. **Would you like to define a primary browser now?** This occurs only when you use DW for the first time on a machine or if the preferences have been deleted.

Answer: Show DW where your browser resides on the Hard Drive. Click OK, +, Browse, Navigate to Desktop, Hard Drive, Internet folder, choose an Internet browser folder such as Netscape or Internet Explorer, select the application's icon, click open, OK, OK. Now try F12 or File > Preview again.